

# CYGNUS

901 Smart Edge Appliance



**tor.ai**<sup>®</sup>

[www.tor.ai](http://www.tor.ai)

The **Cygnus 901 Smart Edge Appliance** is a next-generation IoT solution designed to redefine edge computing and data processing across diverse industries. Built with industrial-grade reliability, Cygnus delivers **powerful computing, multi-protocol support, and seamless connectivity**, making it the ideal choice for IoT, industrial automation, and commercial applications.

Powered by an Android operating system, Cygnus is built as a robust single-board computer with onboard configurable logic and versatile connectivity options, including USB peripherals, HDMI, Ethernet, CANBUS, LTE CAT4, Bluetooth, and Wi-Fi. With its ability to run advanced AI algorithms at the edge and withstand harsh industrial environments up to 70°C, Cygnus empowers developers and system integrators to drive innovation across multiple domains.

## Applications

- Edge computing & IoT gateways
- Industrial automation & control
- Production & shop floor optimization
- Remote monitoring & diagnostics
- Building automation & surveillance
- Retail & Point-of-Sale (POS) solutions
- Smart grid & energy optimization
- EV charging & power management



## Benefits



Effortless integration with diverse systems for seamless interoperability and scalability



Preloaded SDK, popular programming language support, and APIs



Enable accurate decision-making with low-latency real-time insights



Deliver durable performance in harsh environments with a rugged design



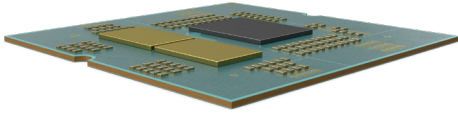
Adapt to future business needs with scalable upgrade and expansion support



Reduce downtime and costs through remote monitoring and control for improved efficiency

## Key features

# CYGNUS



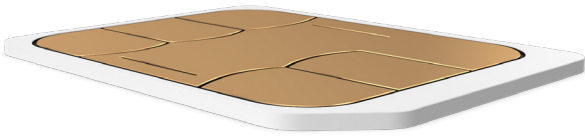
## High storage capacity

16GB flash storage and 2GB RAM



## Audio support

3.5 mm AUX port



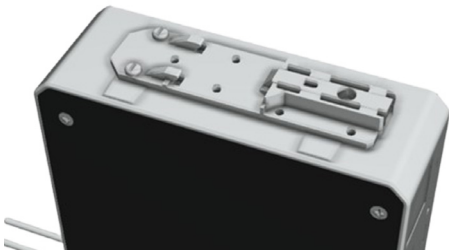
## 4G cellular connectivity

## Nano SIM



## Wireless communication

## Wi-Fi (IEEE 802.11 family) and bluetooth 5.0 (BLE)



## Flexible mounting options

Supports DIN rail & table top mounting



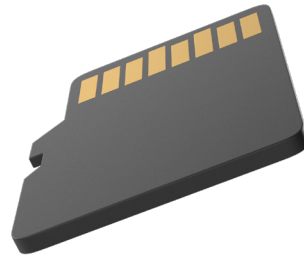
## Versatile connectivity

USB 2.0, Ethernet (RJ45), RS485 & HDMI



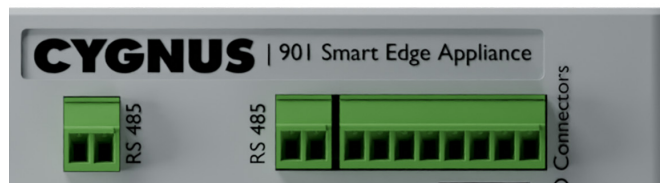
## Multi-network antenna

3 external antennas for GSM, GPS, BLE, and Wi-Fi



## Expandable storage

SD cards support up to 128GB



## Multiple input & output interfaces

4 digital inputs, 1 analog input, and 4 digital outputs



### Compact design

150x115x52 mm

## Industrial automation



Machine vision



SCADA | PLC

## Energy & utilities



Smart grids



Genset

## Transportation & logistics



EV charging controller



Fleet management

## Smart cities & infrastructure



Smart parking



City surveillance  
| ITMS

## Retail & POS systems



POS systems



Store optimization

## Oil & gas



Pipeline monitoring



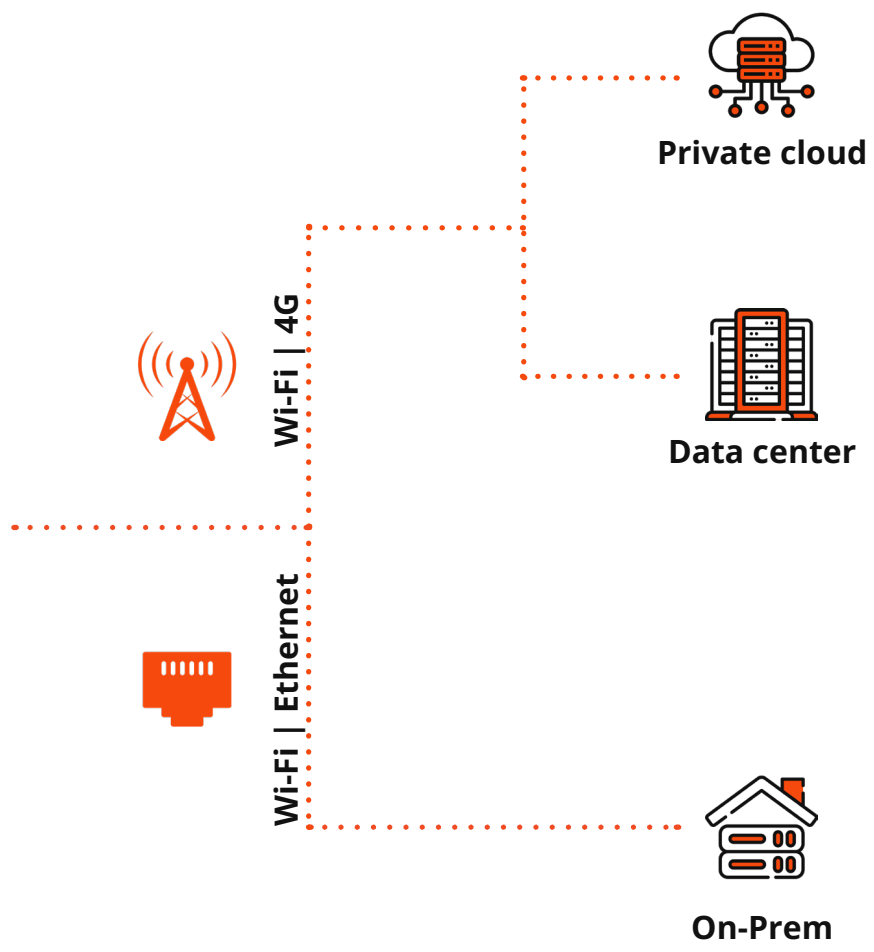
Detects anomalies

**Modbus:**  
**RS-485, RS-422**

**Ethernet**

**Wi-Fi**

**BLE 5.0**



————— Wired      ..... Wireless

<b>Model</b>	<b>901</b>
--------------	------------

## Power Supply

Input Voltage	230V/50Hz AC
Output voltage	5V/5A DC

## SDK

Operating System	Android 13, Linux
Processor	Qualcomm® QCM2290 quad-core ARM® Cortex®-A53@2.0 GHz 64-bit processor with built-in Adreno™ 702 GPU
Supported Programming Languages (for users to develop their own Applications)	C, C++, Python, Java, Node.js etc.
Flash Available for SDK	16GB (Standard) / 32GB (Optional)
RAM Available for SDK	2GB

## Network Protocols

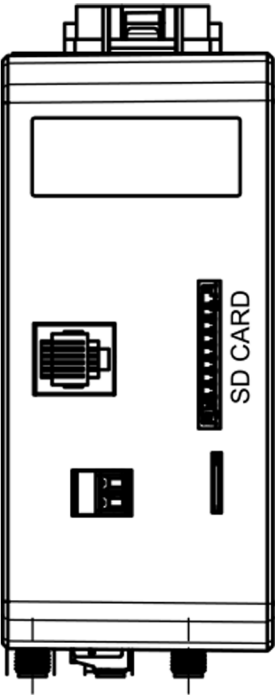
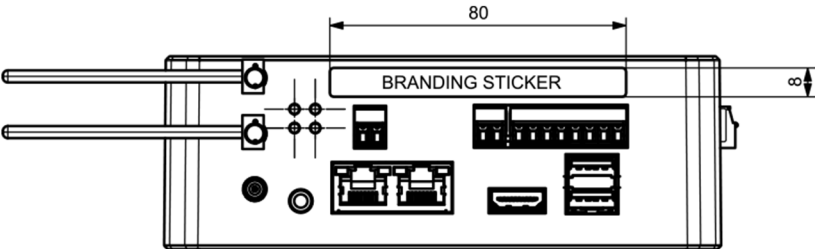
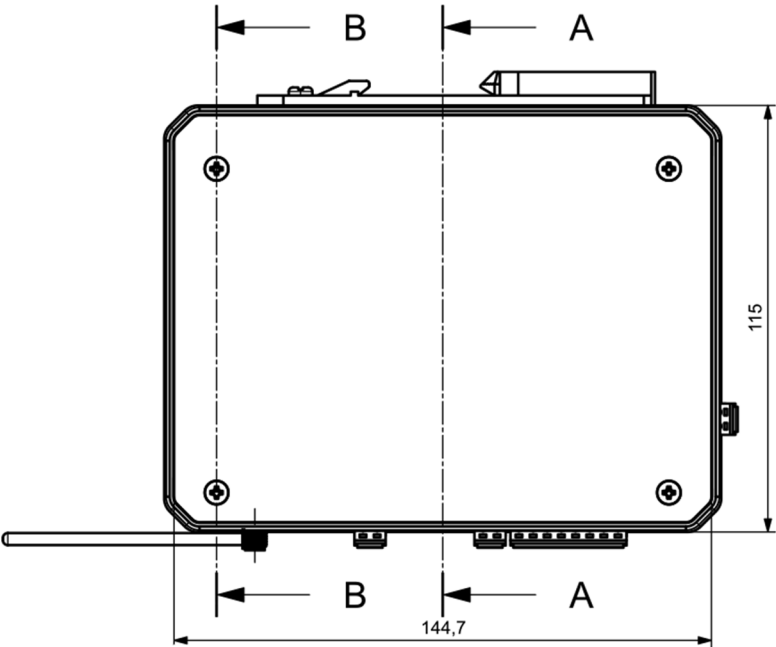
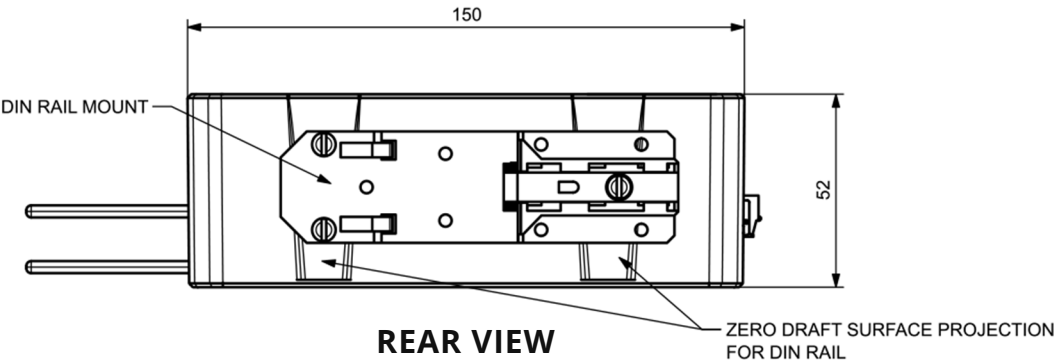
Ethernet, HTTP, MQTT, Modbus (RS485, 422), Modbus TCP/IP, Ethernet IP, BACnet, Profinet, OPCUA
--

## Interfaces

USB	USB 2.0 - 2nos.
Ethernet	RJ45 - 2nos.
Serial	RS485 - 2 Unit
HDMI	1 HDMI port
Audio	3.5 mm AUX to support Speaker & Mic
Antenna	3 Units External Antenna - (GSM, GPS, BLE/WIFI)
Cellular	4G
SIM Slot	Nano SIM - 1 unit
SD CARD Slot	Support upto 128GB
Location Services	GNSS/GPS
Wifi	IEEE 802.11 family of standards
Bluetooth Operation	BLE 5.0
led Indicators	Power & Network 4G(GSM/GPS)
Digital Inputs	4 nos : 0 to 30V
Analog Inputs	1 No. (16 bit) - 0 to 36V & Resistor 0 to 1K
Digital Output	4 Nos (Sink type wit 1A max current)
Power/ Reset Button	Available
RTC	Available

## Enclosure

Mounting	Din Rail / Table Top
Form Factor	115 X 52 x 150 mm (LxWxH)



## Capabilities

---

### 1 RnD

Technology refinement by 100+ inhouse team of engineers and subject matter experts in embedded systems, hardware development, type testing - validation, application and platform development.

### 2 Application & Analytics

Expertise in developing and deploying customized applications with platform and database development along with managing infrastructure and security.

### 3 Manufacturing

Our hardware is manufactured in state-of-the-art pick and place setup for board building along with code burning bank for building multiple boards in parallel.

## Tor.ai Limited

HQ - Pune

Bangalore | Delhi NCR | Dubai | Nairobi

Chennai | Ahmedabad | Kolkata | Mumbai

☎ : +91 937 346 7304

✉ : [contactus@tor.ai](mailto:contactus@tor.ai)

🌐 : [www.tor.ai](http://www.tor.ai)